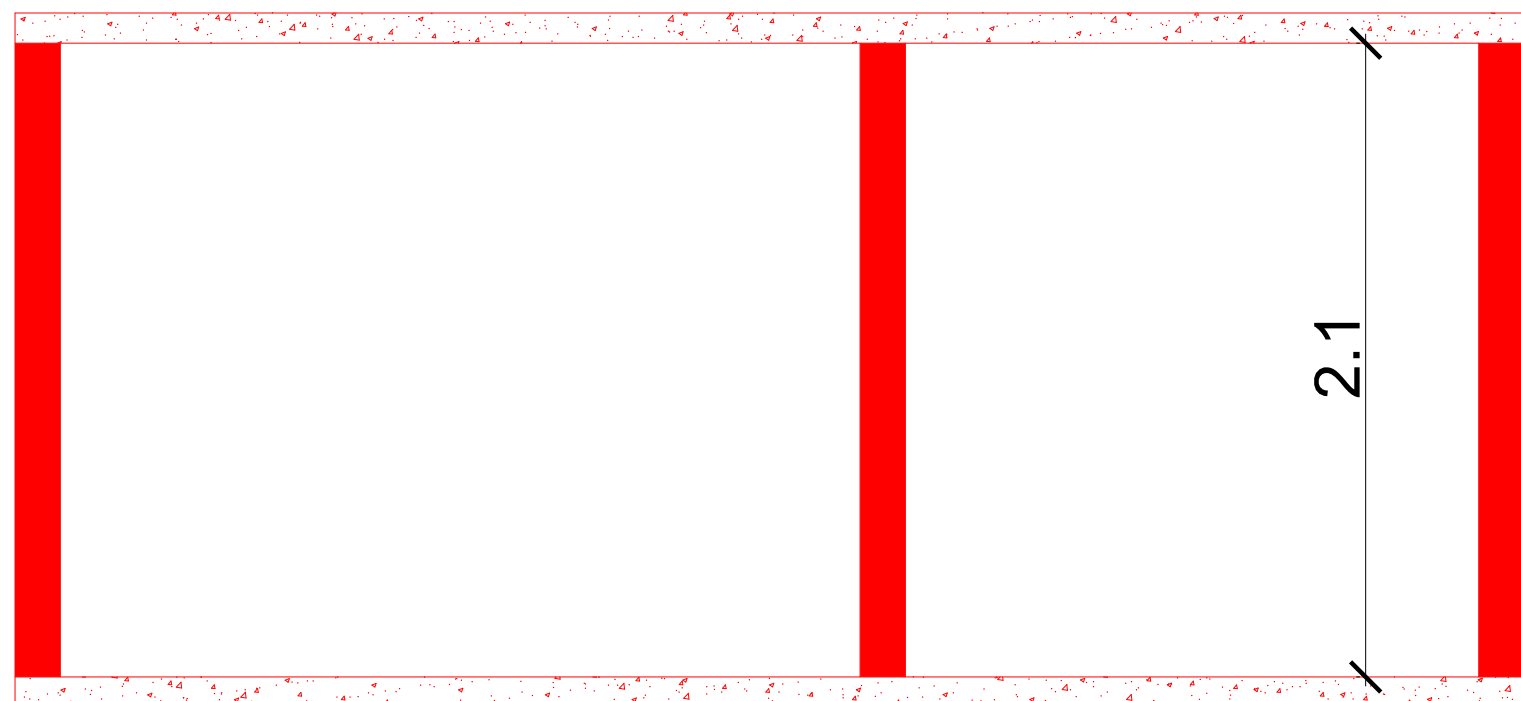
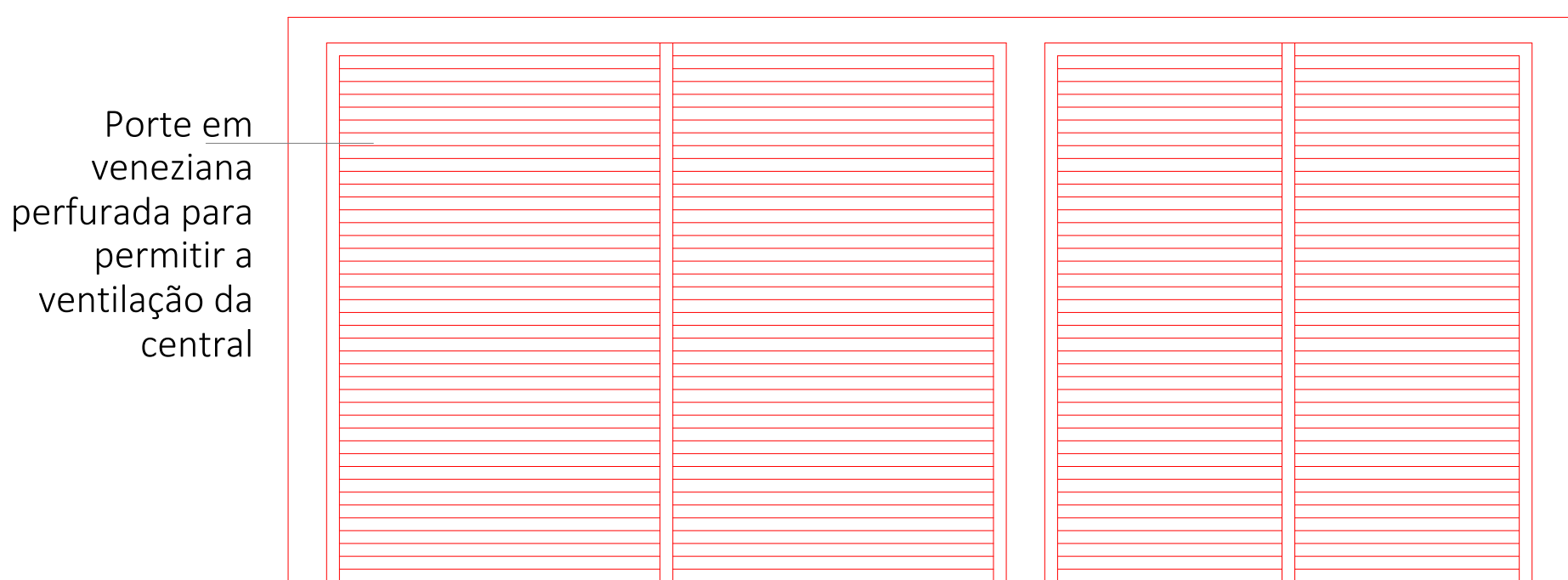


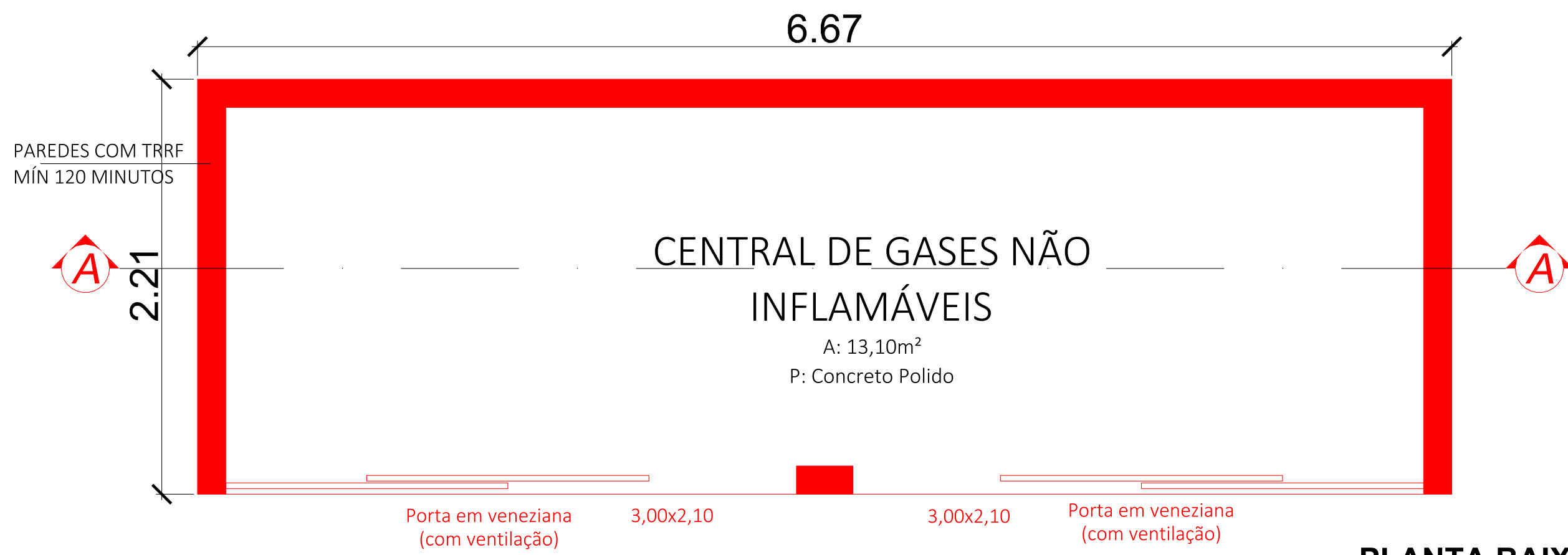
PLANTA BAIXA
ESC:1/25



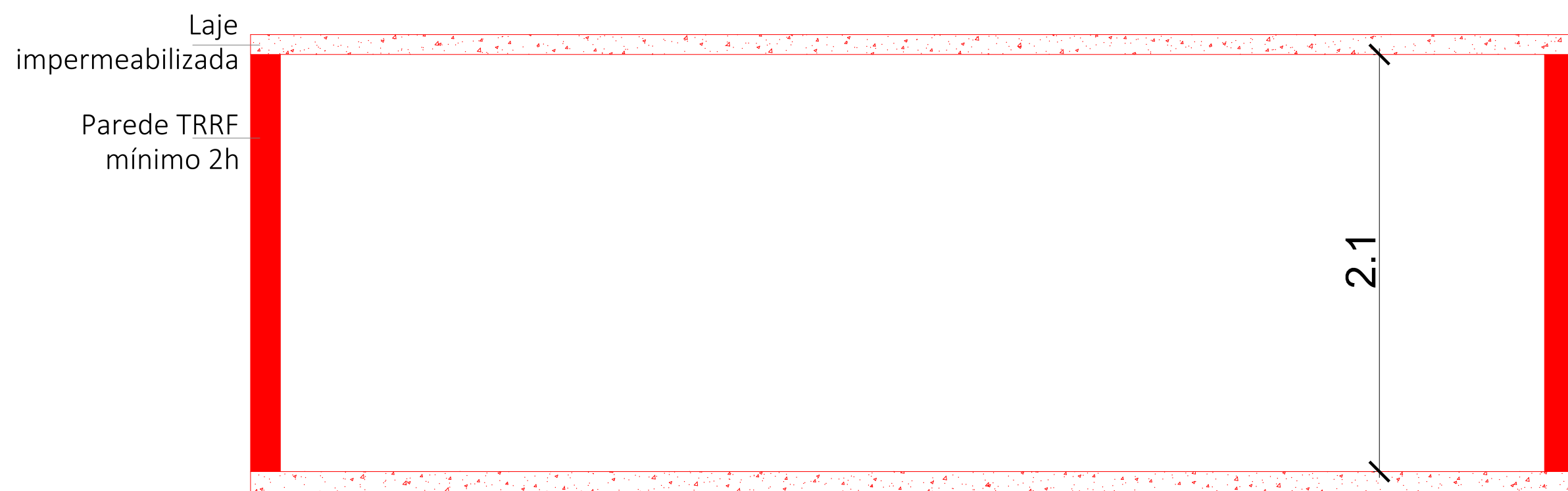
CORTE AA
ESC:1/25



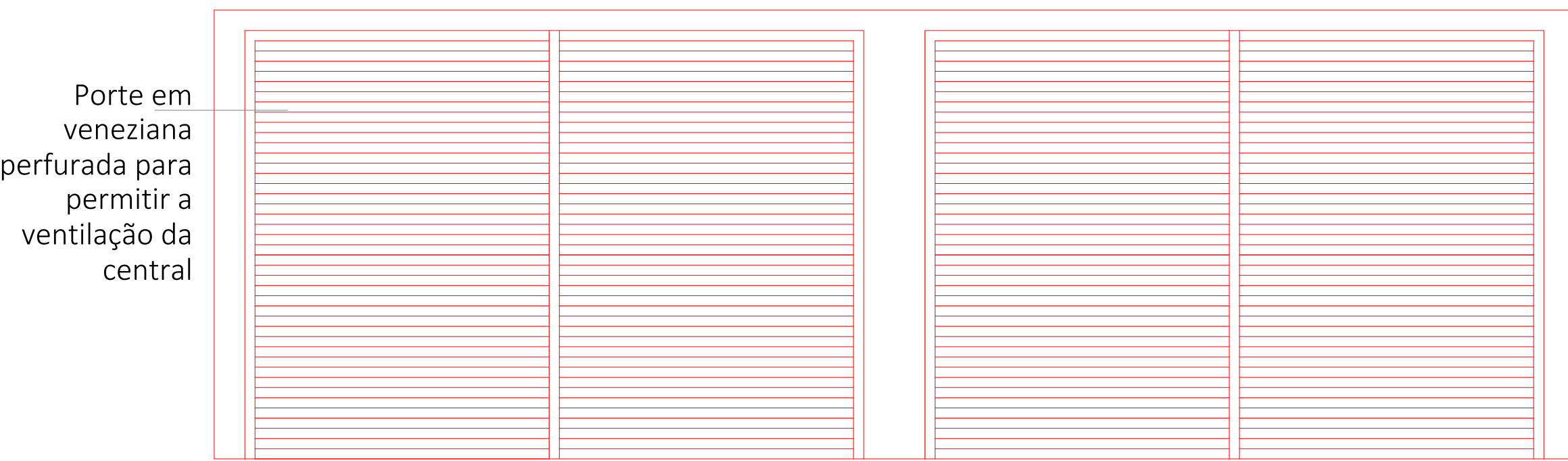
VISTA FRONTAL
ESC:1/25



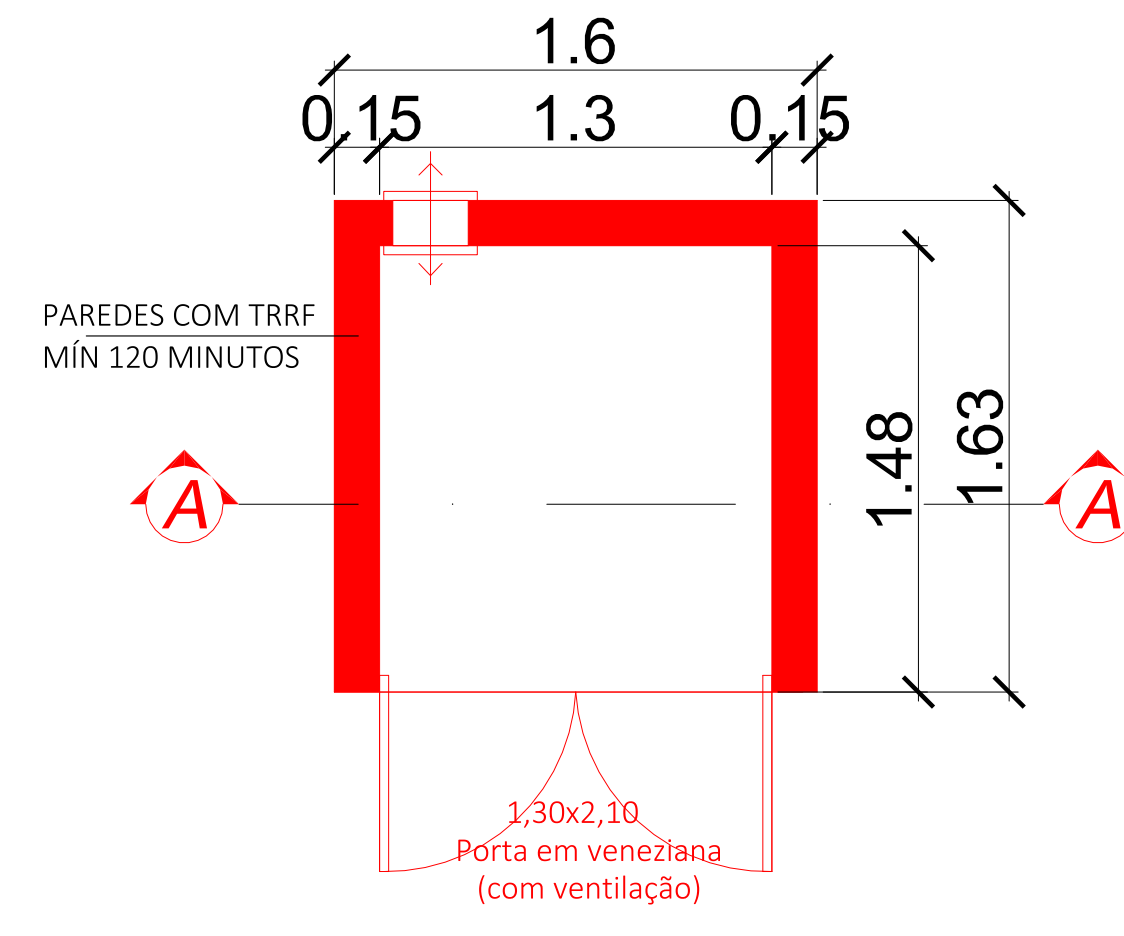
PLANTA BAIXA
ESC:1/25



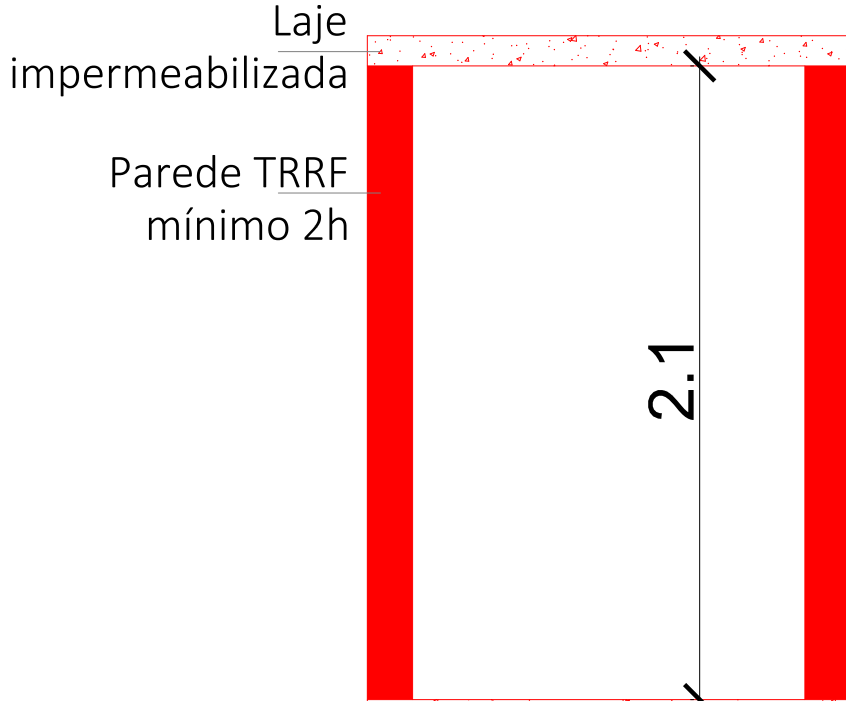
CORTE AA
ESC:1/25



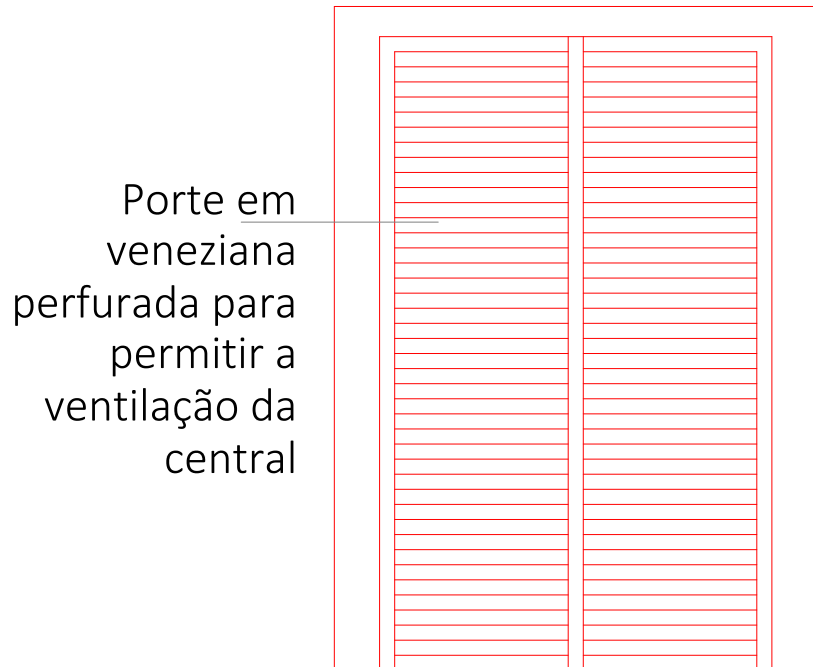
VISTA FRONTAL
ESC:1/25



PLANTA BAIXA
ESC:1/25

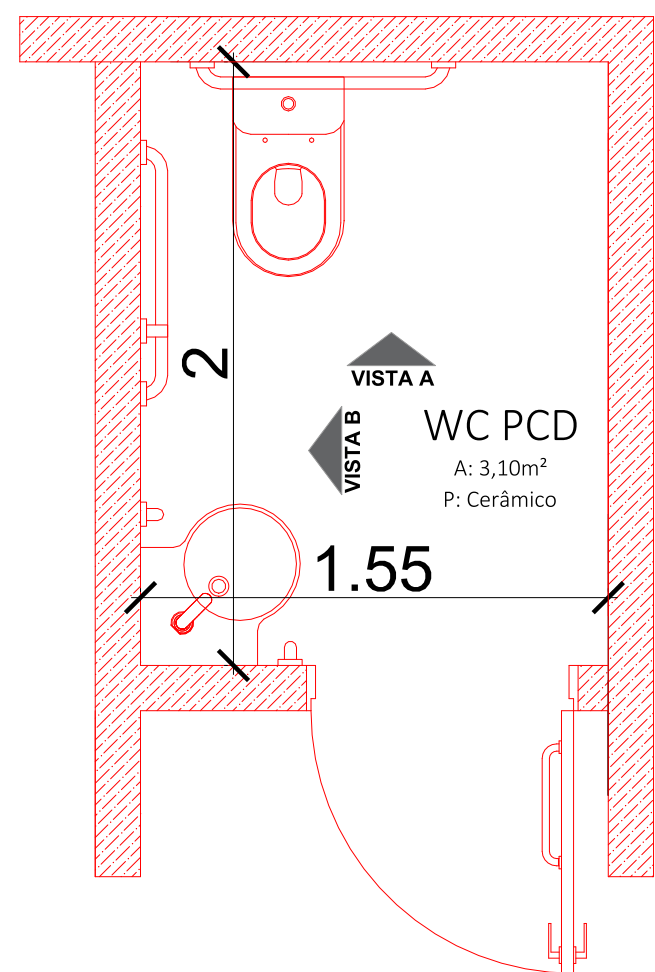


CORTE AA
ESC:1/25

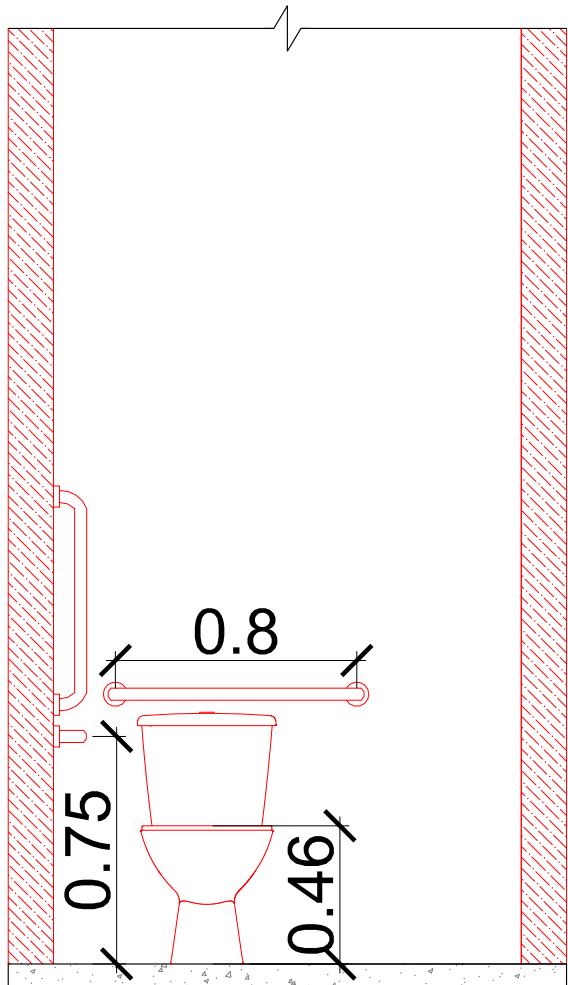


VISTA FRONTAL
ESC:1/25

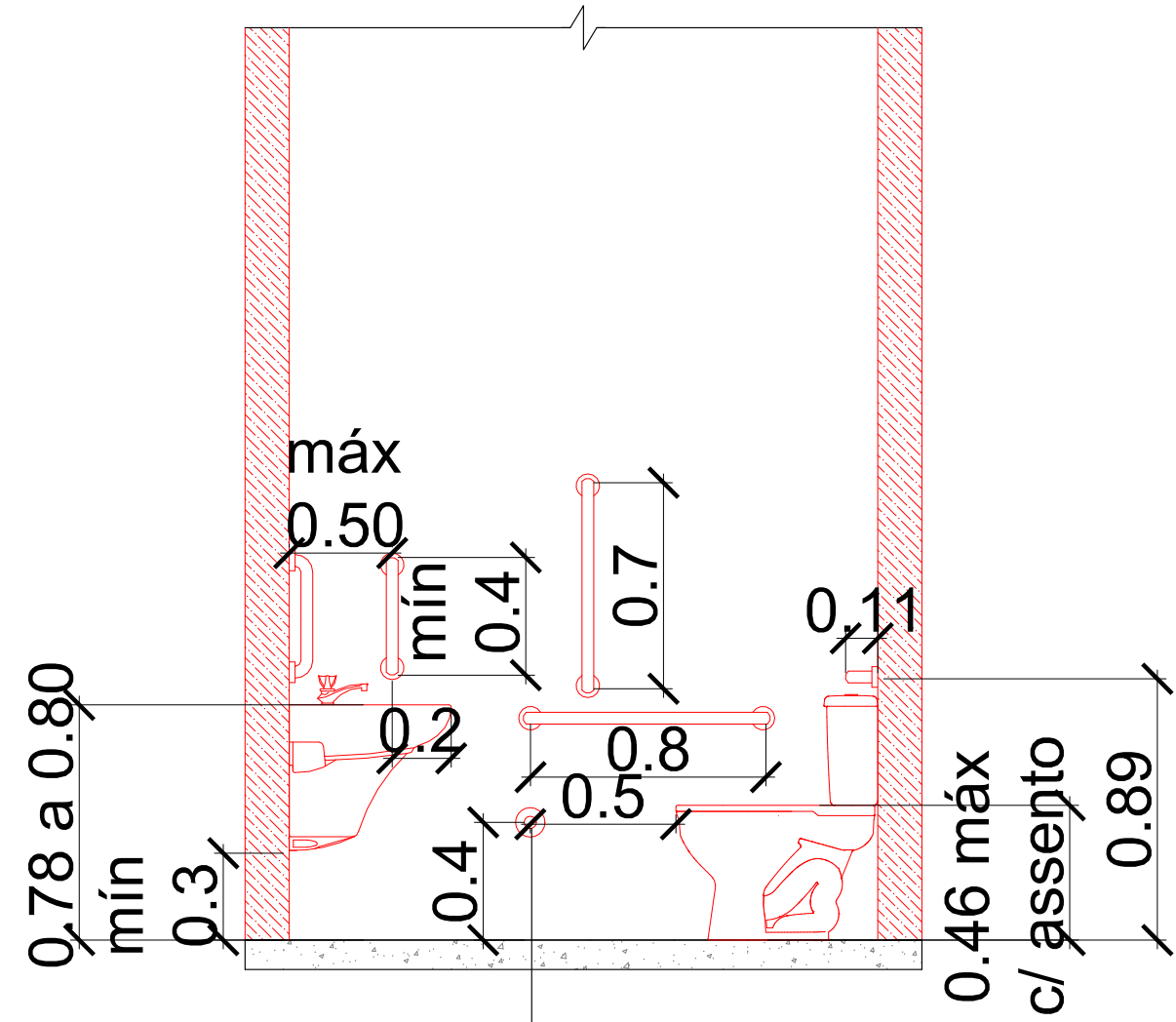
DETALHE WC PCD



PLANTA BAIXA
ESC:1/25



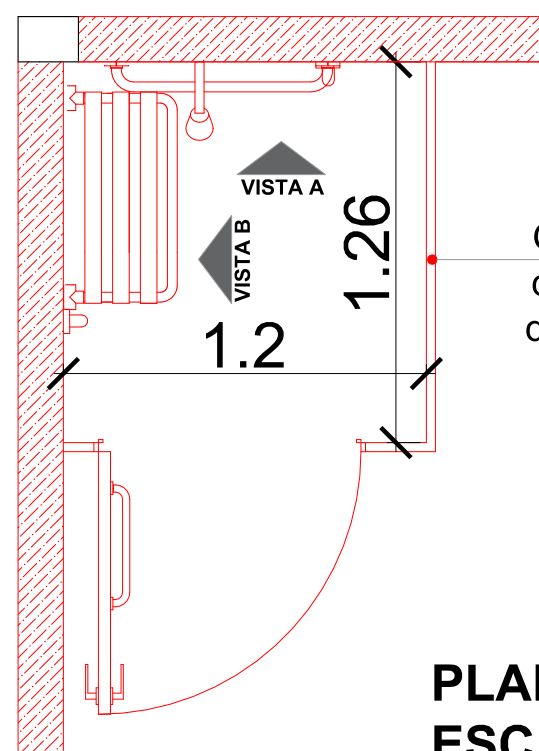
VISTA AA
ESC:1/25



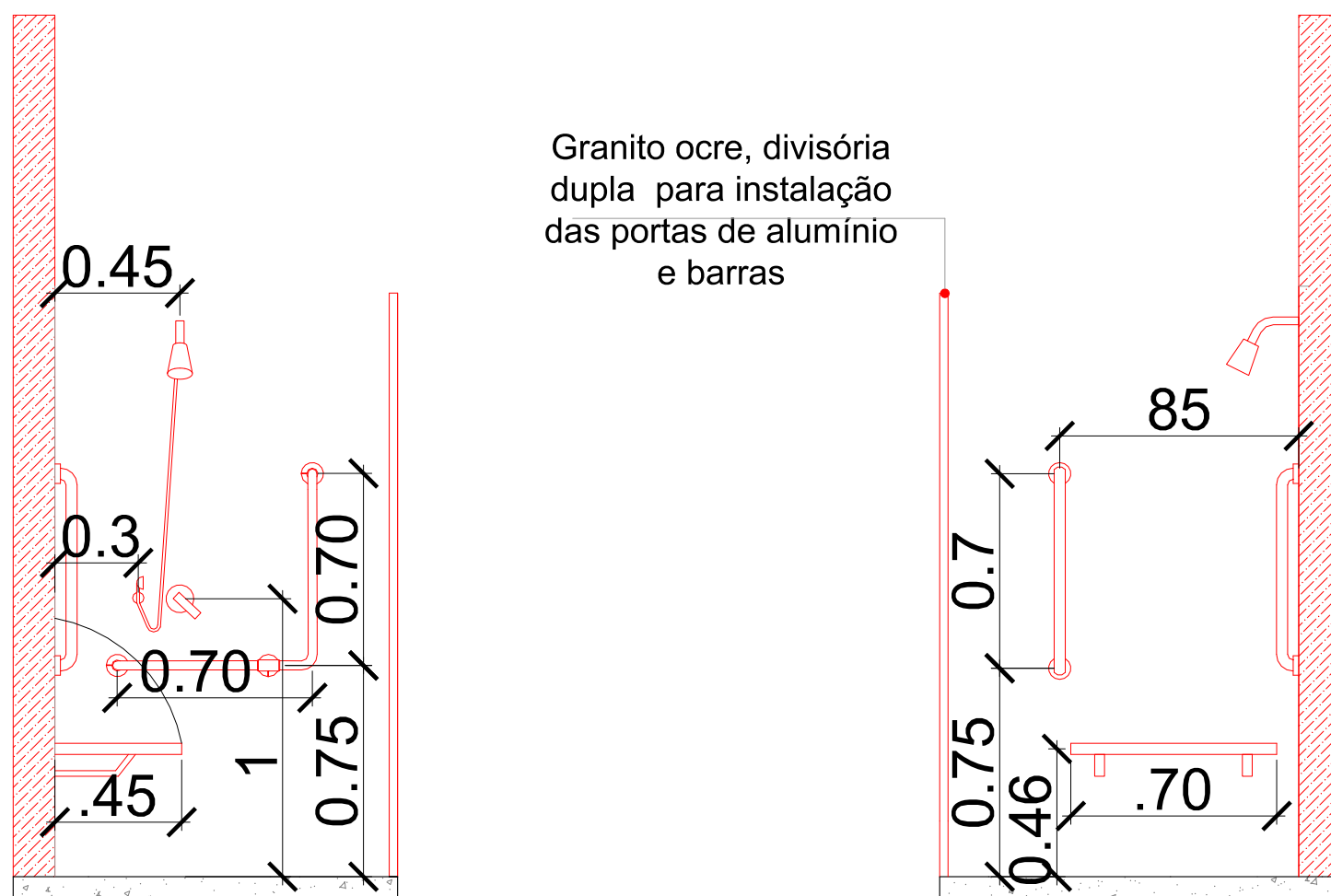
VISTA BB
ESC:1/25

Ponto de alarme com
sinal sonoro do lado externo,
fixado á 40cm do chão

DETALHE
VESTIÁRIO



PLANTA BAIXA
ESC:1/25



Granito ocre, divisória
dupla para instalação
das portas de alumínio
e barras

TÍTULO	
PROJETO ARQUITETÔNICO PARA LABORATÓRIO FÍSICO QUÍMICO - LAFO - UNIDADE DA	
EMBRYA SUINOS E AVES - CONCORDIA/SC	
IDENTIFICAÇÃO DO PROJETO	
BR 153, Km 110, C.P. 321, Distrito de Tamanduá	
Cap. 88710-899 Concórdia - SC	
DATA	PROPRIETÁRIOS
OCTUBRO/2025	EMPRESA BOMBEIRO DE PROTEÇÃO AGRÍCOLA
ESCALA	EMPRESA BOMBEIRO DE PROTEÇÃO AGRÍCOLA
INDICADA	EMPRESA BOMBEIRO DE PROTEÇÃO AGRÍCOLA
RESP. TÉCNICO	RESUMO
JORDANA SANDI	JORDANA & KAMILA
KAMILA G. T. STUANI	DETALHES